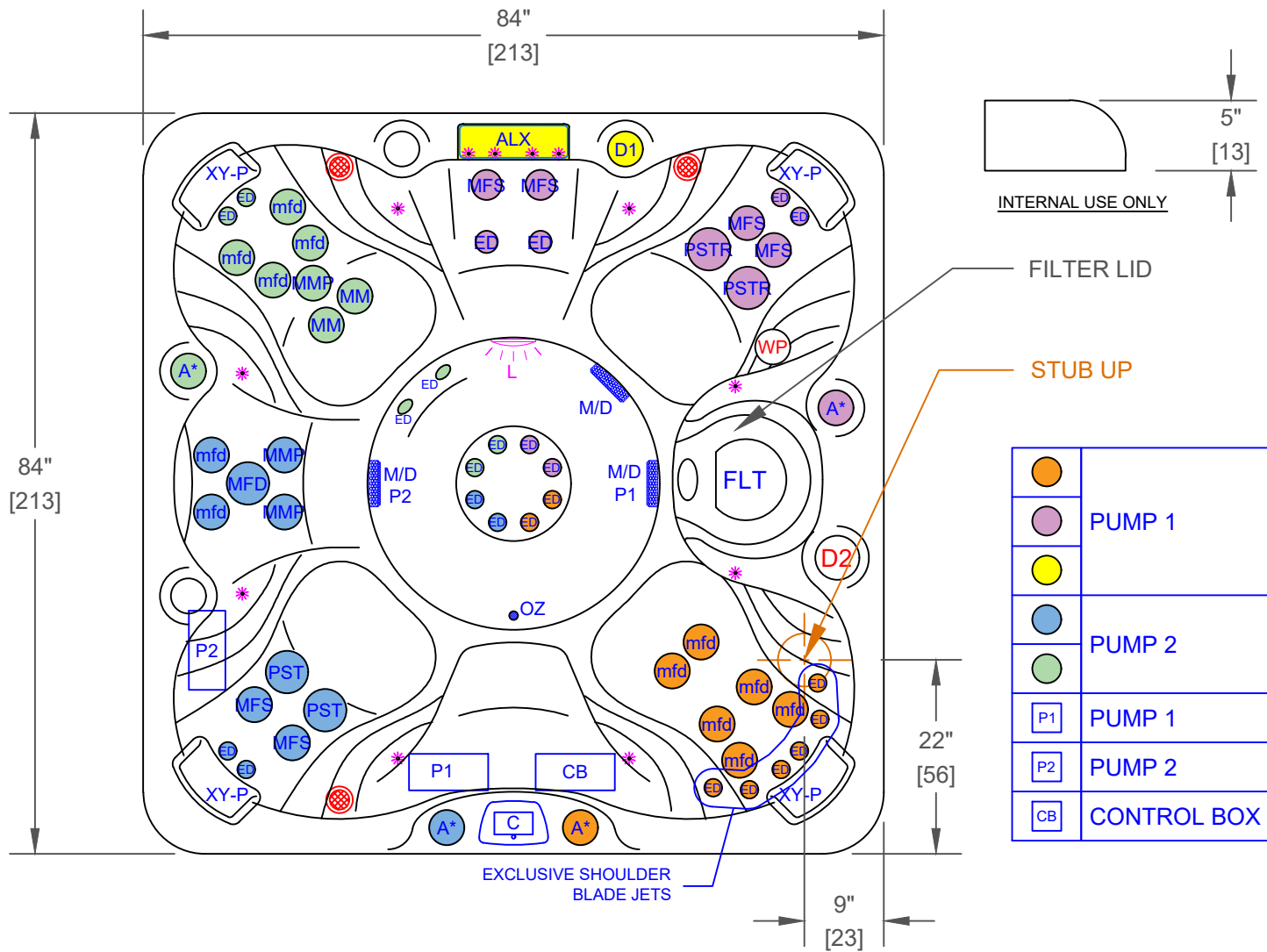


NOTES:

1. DUE TO OUR CONTINUOUS IMPROVEMENT PROGRAM, ALL MODELS AND SPECIFICATIONS ARE SUBJECT TO CHANGE WITHOUT NOTICE.




**PPZ-752B - LEGEND**

SYMB.	DESCRIPTION	PART NUMBER	QTY.
ED	EURO DIRECTIONAL BLACK	PLUCS2295051S	24
mfd	MINI STORM DIRECTIONAL	PLUCS2295061S	12
MFD	MAXI FLOW DIRECTIONAL BLACK	PLUCS2295091S	1
MM	MINI-STORM TWIN ROTO BLACK	PLUCS2298061S	2
MMP	MINI-MULTI MASSAGE BLACK	PLUCS2295171S	3
MFS	MAXI SWIRL ROTO BLACK	PLUCS2295101S	6
PSTR	POWER STORM TWIN ROTO JET BLACK	PLUCS2295181S	2
PST	PWR STORM WAGON WHEEL-BLACK	PLUCS2295191S	2
A	VELOCITY AIR CONTROL VALVE		4
ALX	LED WATERFALL WITH D1 VALVE		1
FLT	50 SQ. FT. BIO-CLEAN FILTER WITH TELEWEIR (SQR)		1
M/D	MAIN DRAIN		3
XY-P	TEXTURED Y-PILLOW		4
C	TOUCH 2		1
OZ	HYDRO CLEAR OZONATOR		1
L	5" MULTI COLORED LED LIGHT		1
*	PERIMETER LED LIGHTING		1
-	FILTER LID		1

**OPTIONS**

SYMB.	DESCRIPTION	OPTION NUMBER
-	VALUE PACK ELITE: PURE CURE UV LIGHT, V-DESIGN ELITE CABINET w/BEAM LIGHTING (COLORS GRAY, MOCHA, LIME OAK.) WHIRLPOOL WITH D2 VALVE	VP24-ELITE

<p>PROPRIETARY AND CONFIDENTIAL</p> <p>THE INFORMATION CONTAINED IN THIS DRAWING IS THE SOLE PROPERTY OF CAL SPAS. ANY REPRODUCTION IN PART OR AS A WHOLE WITHOUT THE WRITTEN PERMISSION OF CAL SPAS IS PROHIBITED.</p>		 <p>CAL SPAS INC. 1462 EAST NINTH STREET, POMONA, CA 91766</p>	
SPECIFICATIONS		TITLE	JET LAYOUT - STD
DIMENSION (in)	84"x84"x37"	LINE	PATIO PLUS
DIMENSION (cm)	213x213x94	MODEL	2024 SPA LINE TROPICAL PLUS
DRY WEIGHT	800 LBS [363 Kg]	NUM	PPZ-752B
FILLED WEIGHT	4340 LBS [1969 Kg]	DWG NO.	CS003134
		REV	A
WATER CAP.	425 GAL [1609 L]	SCALE	NTS
		SHEET 1 OF 1	